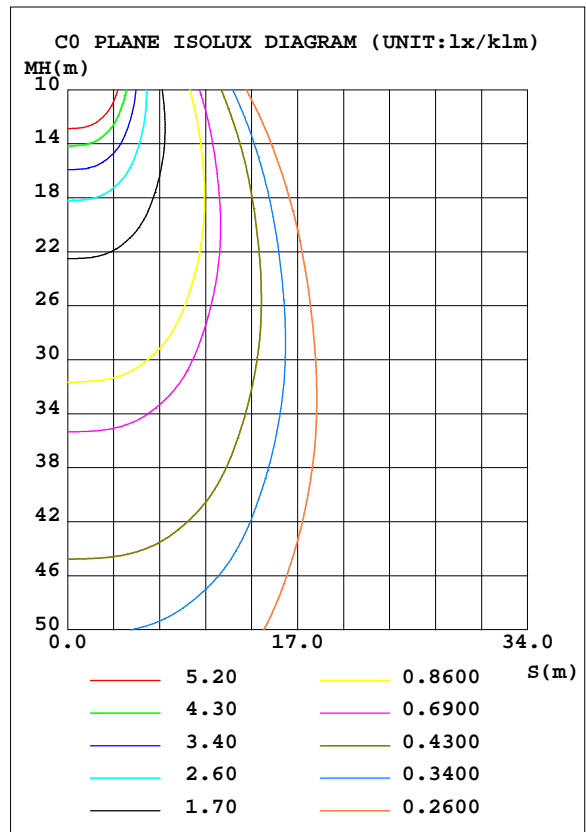
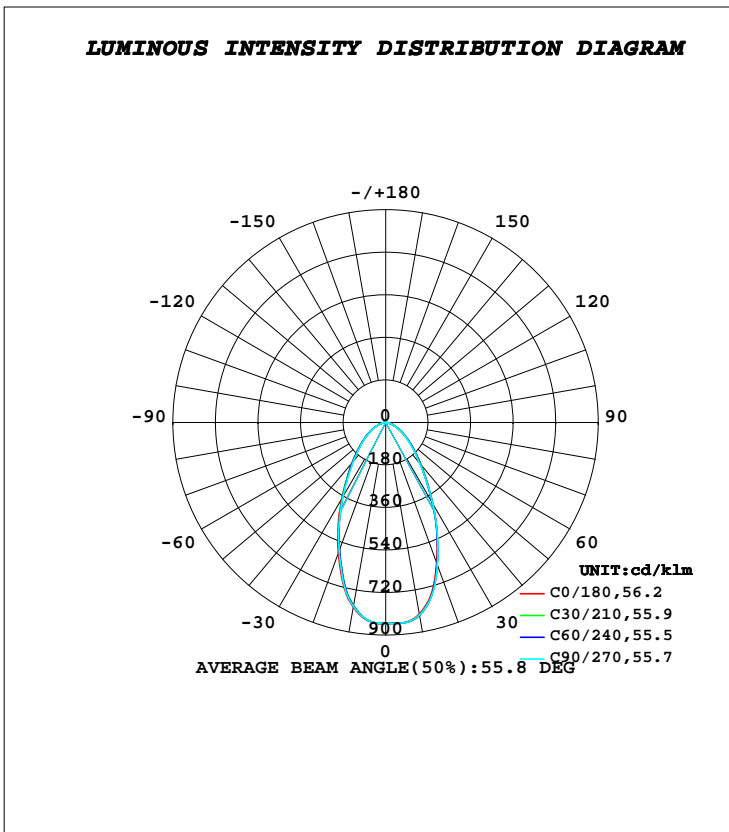


LUMINAIRE PHOTOMETRIC TEST REPORT

Test:U:221.33V I:0.7058A P:151.32W PF:0.9687 Freq:49.99Hz Lamp Flux:24727.1x1 lm		
NAME: UFO	TYPE:150w	WEIGHT:
SPEC.:	DIM.:	SERIAL No.:
MFR.:	SUR.:	Shielding Angle:

DATA OF LAMP		PHOTOMETRIC DATA Eff: 163.41 lm/W			
MODEL	UFO	I _{max} (cd/klm)	851.8	S/MH(C0/180)	0.82
NOMINAL POWER(W)	150	LOR(%)	100.0	S/MH(C90/270)	0.81
RATED VOLTAGE(V)	220.0	TOTAL FLUX(lm/klm)	1000.0	η UP, DN(C0-180)	0.3,50.7
NOMINAL FLUX(lm)	24727.1	CIE CLASS	DIRECT	η UP, DN(C180-360)	0.3,48.8
LAMPS INSIDE	1	η up(%)	0.6	CIBSE SHR NOM	0.75
TEST VOLTAGE(V)	220.0	η down(%)	99.4	CIBSE SHR MAX	0.90



C Range: 0 - 360DEG
C Interval: 30.0DEG
Test Speed: HIGH
Temperature:25.3DEG
Operators:01
Test Date:2019-05-30

γ Range: 0 - 180DEG
γ Interval: 1.0DEG
Test System:EVERFINE GO-2000B_V1 SYSTEM V2.0.405.8
Humidity:65.0%
Test Distance:8.300m [K=1.0000]
Remarks:

ZONAL FLUX DIAGRAM

ZONAL FLUX DIAGRAM:

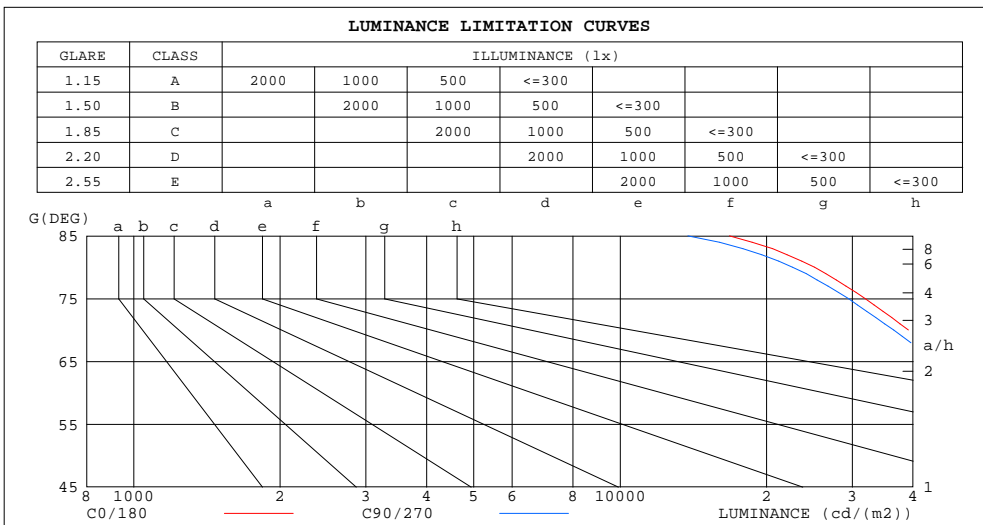
γ	C0	C45	C90	C135	C180	C225	C270	C315	γ	Φ zone	Φ total	%lum,lamp
10	822.7	828.0	826.6	812.8	793.4	787.0	789.4	805.2	0- 10	79.62	79.62	7.96,7.96
20	632.1	639.1	640.9	618.3	586.2	573.3	576.5	608.5	10- 20	201.0	280.6	28.1,28.1
30	401.4	398.6	399.1	389.0	371.7	366.3	361.9	388.2	20- 30	226.0	506.6	50.7,50.7
40	233.1	229.2	224.7	221.0	220.1	218.0	210.6	223.6	30- 40	184.0	690.5	69.1,69.1
50	136.0	134.1	130.0	128.3	130.3	130.4	126.6	131.8	40- 50	132.7	823.2	82.3,82.3
60	76.51	75.67	73.60	72.73	73.90	75.05	72.90	75.17	50- 60	90.17	913.4	91.3,91.3
70	36.10	35.06	34.19	34.15	34.88	36.00	35.19	35.73	60- 70	52.78	966.2	96.6,96.6
80	11.76	10.98	10.76	10.93	11.30	12.03	11.76	11.78	70- 80	23.44	989.6	99,99
90	0.0979	0.0949	0.0926	0.0950	0.0660	0.0693	0.0684	0.0681	80- 90	4.706	994.3	99.4,99.4
100	0.1807	0.1838	0.1802	0.1839	0.1434	0.1397	0.1372	0.1362	90-100	0.1255	994.5	99.4,99.4
110	0.3320	0.3368	0.3305	0.3383	0.2836	0.2777	0.2713	0.2693	100-110	0.2401	994.7	99.5,99.5
120	0.5607	0.5662	0.5543	0.5725	0.5029	0.4939	0.4825	0.4797	110-120	0.4041	995.1	99.5,99.5
130	0.9047	0.9078	0.8948	0.9315	0.8438	0.8316	0.8197	0.8123	120-130	0.6119	995.7	99.6,99.6
140	1.418	1.415	1.409	1.472	1.374	1.365	1.354	1.330	130-140	0.8574	996.6	99.7,99.7
150	2.103	2.091	2.094	2.169	2.075	2.076	2.065	2.019	140-150	1.078	997.6	99.8,99.8
160	2.834	2.826	2.824	2.882	2.807	2.804	2.789	2.745	150-160	1.125	998.8	99.9,99.9
170	3.486	3.485	3.477	3.502	3.472	3.465	3.447	3.413	160-170	0.8831	999.7	100,100
180	3.803	3.812	3.805	3.796	3.819	3.812	3.794	3.796	170-180	0.3458	1000	100,100
DEG	LUMINOUS INTENSITY:cd/klm									UNIT: lm/klm		

C Range: 0 - 360DEG
C Interval: 30.0DEG
Test Speed: HIGH
Temperature:25.3DEG
Operators:01
Test Date:2019-05-30

γ Range: 0 - 180DEG
 γ Interval: 1.0DEG
Test System:EVERFINE GO-2000B_V1 SYSTEM V2.0.405.8
Humidity:65.0%
Test Distance:8.300m [K=1.0000]
Remarks:

LUMINANCE LIMITATION CURVES

Test:U:221.33V I:0.7058A P:151.32W PF:0.9687 Freq:49.99Hz Lamp Flux:24727.1x1 lm		
NAME: UFO	TYPE:150w	WEIGHT:
SPEC.:	DIM.:	SERIAL No.:
MFR.:	SUR.:	Shielding Angle:



LUMINANCE cd/(m2)		
G(DEG)	C0/180	C90/270
85	16771	13779
80	25093	22612
75	31899	29468
70	39111	36469
65	47450	44556
60	56712	53692
55	66797	63007
50	78426	73775
45	93139	87775

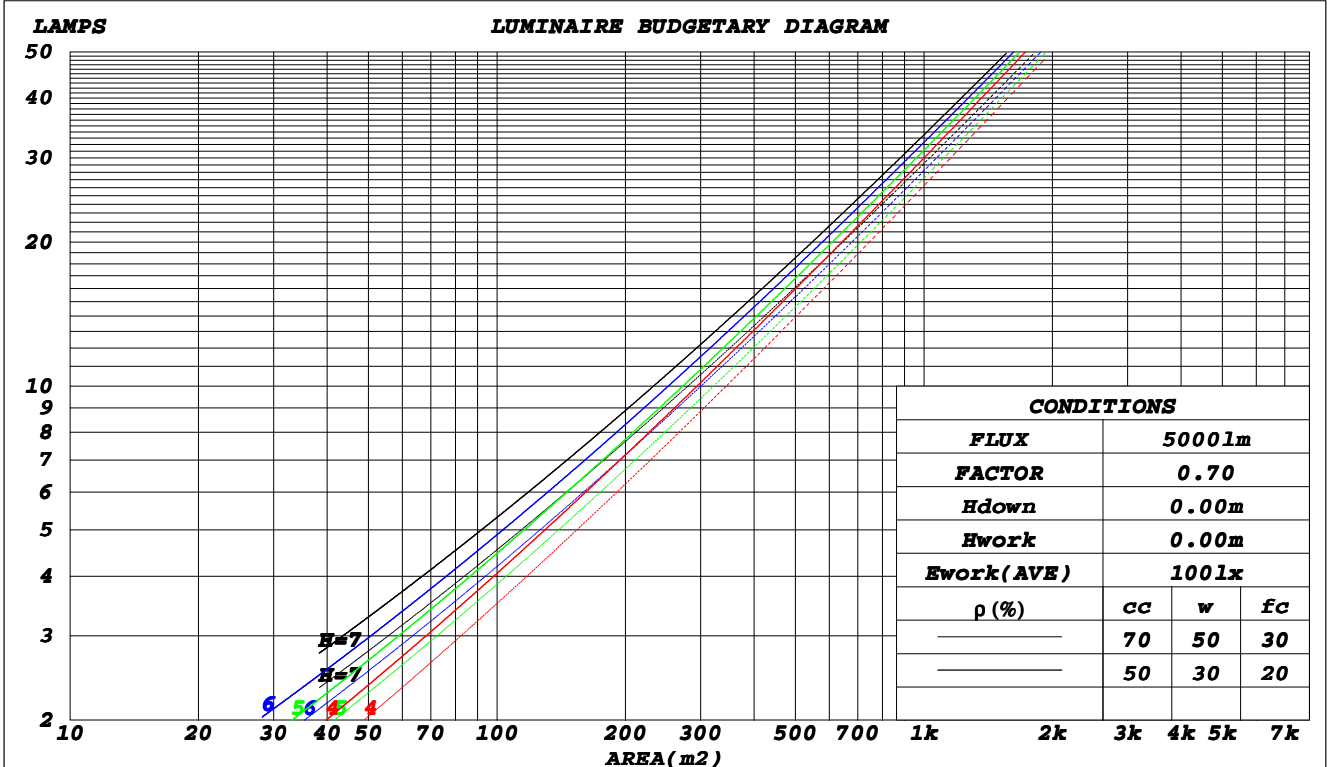
C Range: 0 - 360DEG
C Interval: 30.0DEG
Test Speed: HIGH
Temperature: 25.3DEG
Operators: 01
Test Date: 2019-05-30

γ Range: 0 - 180DEG
γ Interval: 1.0DEG
Test System: EVERFINE GO-2000B_V1 SYSTEM V2.0.405.8
Humidity: 65.0%
Test Distance: 8.300m [K=1.0000]
Remarks:

CU AND LUMINAIRE BUDGETARY ESTIMATE DIAGRAM

Test:U:221.33V I:0.7058A P:151.32W PF:0.9687 Freq:49.99Hz Lamp Flux:24727.1x1 lm		
NAME: UFO	TYPE:150w	WEIGHT:
SPEC.:	DIM.:	SERIAL No.:
MFR.:	SUR.:	Shielding Angle:

ρ_{cc}	80%			70%			50%			30%			10%			0
ρ_w	50%	30%	10%	50%	30%	10%	50%	30%	10%	50%	30%	10%	50%	30%	10%	0
ρ_{fc}	20%			20%			20%			20%			20%			0
RCR	RCR:Room Cavity Ratio															
	Coefficients of Utilization(CU)															
0.0	1.19	1.19	1.19	1.16	1.16	1.16	1.11	1.11	1.11	1.06	1.06	1.06	1.02	1.02	1.02	.99
1.0	1.08	1.05	1.02	1.06	1.03	1.00	1.01	.99	.97	.98	.96	.94	.94	.92	.91	.89
2.0	.98	.93	.88	.96	.91	.87	.92	.89	.85	.89	.86	.83	.86	.84	.81	.79
3.0	.89	.83	.78	.87	.82	.77	.85	.80	.75	.82	.78	.74	.79	.76	.73	.71
4.0	.81	.74	.69	.80	.74	.69	.78	.72	.68	.75	.71	.67	.73	.69	.66	.64
5.0	.75	.67	.62	.74	.67	.62	.72	.66	.61	.70	.65	.61	.68	.64	.60	.58
6.0	.69	.62	.56	.68	.61	.56	.66	.60	.56	.65	.59	.55	.63	.59	.55	.53
7.0	.64	.57	.52	.63	.56	.51	.62	.56	.51	.60	.55	.51	.59	.54	.50	.49
8.0	.60	.52	.48	.59	.52	.47	.58	.52	.47	.57	.51	.47	.55	.50	.47	.45
9.0	.56	.49	.44	.55	.49	.44	.54	.48	.44	.53	.48	.44	.52	.47	.43	.42
10.0	.52	.46	.41	.52	.45	.41	.51	.45	.41	.50	.44	.41	.49	.44	.40	.39



C Range: 0 - 360DEG
 C Interval: 30.0DEG
 Test Speed: HIGH
 Temperature: 25.3DEG
 Operators: 01
 Test Date: 2019-05-30

γ Range: 0 - 180DEG
 γ Interval: 1.0DEG
 Test System: EVERFINE GO-2000B_V1 SYSTEM V2.0.405.8
 Humidity: 65.0%
 Test Distance: 8.300m [K=1.0000]
 Remarks:

WEC AND CCEC

Test:U:221.33V I:0.7058A P:151.32W PF:0.9687 Freq:49.99Hz Lamp Flux:24727.1x1 lm		
NAME: UFO	TYPE:150w	WEIGHT:
SPEC.:	DIM.:	SERIAL No.:
MFR.:	SUR.:	Shielding Angle:

ρ_{cc}	80%			70%			50%			30%			10%			0
ρ_w	50%	30%	10%	50%	30%	10%	50%	30%	10%	50%	30%	10%	50%	30%	10%	0
ρ_{fc}	20%			20%			20%			20%			20%			0
RCR	RCR:Room Cavity Ratio						Wall Exitance Coefficients(WEC)									
0.0																
1.0	.229	.130	.041	.222	.127	.040	.209	.120	.038	.197	.114	.036	.186	.108	.035	
2.0	.220	.121	.037	.214	.118	.036	.203	.113	.035	.192	.108	.034	.183	.103	.033	
3.0	.208	.111	.033	.203	.109	.033	.193	.104	.032	.184	.101	.031	.175	.097	.030	
4.0	.195	.102	.030	.191	.100	.030	.182	.097	.029	.174	.094	.028	.167	.091	.028	
5.0	.184	.094	.027	.180	.092	.027	.172	.090	.026	.165	.087	.026	.158	.085	.025	
6.0	.173	.087	.025	.169	.086	.025	.163	.083	.024	.156	.081	.024	.150	.079	.023	
7.0	.163	.081	.023	.160	.080	.023	.154	.078	.022	.148	.076	.022	.143	.074	.022	
8.0	.154	.075	.021	.151	.075	.021	.146	.073	.021	.141	.071	.021	.136	.070	.020	
9.0	.146	.071	.020	.143	.070	.020	.139	.069	.019	.134	.067	.019	.130	.066	.019	
10.0	.139	.066	.018	.136	.066	.018	.132	.065	.018	.128	.063	.018	.124	.062	.018	

ρ_{cc}	80%			70%			50%			30%			10%			0
ρ_w	50%	30%	10%	50%	30%	10%	50%	30%	10%	50%	30%	10%	50%	30%	10%	0
ρ_{fc}	20%			20%			20%			20%			20%			0
RCR	RCR:Room Cavity Ratio						Ceiling Cavity Exitance Coefficients(CCEC)									
0.0																
1.0	.195	.195	.195	.166	.166	.166	.114	.114	.114	.065	.065	.065	.021	.021	.021	
2.0	.179	.161	.145	.153	.138	.125	.105	.095	.086	.060	.055	.050	.019	.018	.016	
3.0	.167	.137	.111	.143	.118	.096	.098	.081	.067	.057	.047	.039	.018	.015	.013	
4.0	.157	.118	.087	.135	.102	.076	.092	.071	.053	.053	.041	.031	.017	.013	.010	
5.0	.148	.104	.071	.127	.090	.061	.087	.063	.043	.051	.037	.026	.016	.012	.008	
6.0	.140	.093	.059	.120	.081	.051	.083	.056	.036	.048	.033	.021	.015	.011	.007	
7.0	.133	.084	.049	.114	.073	.043	.079	.051	.030	.046	.030	.018	.015	.010	.006	
8.0	.126	.077	.043	.109	.067	.037	.075	.047	.026	.044	.028	.016	.014	.009	.005	
9.0	.120	.071	.037	.104	.062	.032	.072	.043	.023	.042	.026	.014	.014	.008	.005	
10.0	.115	.066	.033	.099	.057	.029	.069	.040	.020	.040	.024	.012	.013	.008	.004	

C Range: 0 - 360DEG
C Interval: 30.0DEG
Test Speed: HIGH
Temperature:25.3DEG
Operators:01
Test Date:2019-05-30

γ Range: 0 - 180DEG
 γ Interval: 1.0DEG
Test System:EVERFINE GO-2000B_V1 SYSTEM V2.0.405.8
Humidity:65.0%
Test Distance:8.300m [K=1.0000]
Remarks:

UGR(Unified Glare Rating) Table

Test:U:221.33V I:0.7058A P:151.32W PF:0.9687 Freq:49.99Hz Lamp Flux:24727.1x1 lm										
NAME: UFO					TYPE:150w			WEIGHT:		
SPEC.:					DIM.:			SERIAL No.:		
MFR.:					SUR.:			Shielding Angle:		
ceiling/cavity	0.7	0.7	0.5	0.5	0.3	0.7	0.7	0.5	0.5	0.3
walls	0.5	0.3	0.5	0.3	0.3	0.5	0.3	0.5	0.3	0.3
working plane	0.2	0.2	0.2	0.2	0.2	0.2	0.2	0.2	0.2	0.2
Room dimensions	Viewed crosswise					Viewed endwise				
x = 2H y = 2H	14.9	16.1	15.2	16.3	16.5	14.7	15.9	14.9	16.1	16.3
3H	15.6	16.7	15.9	16.9	17.1	15.3	16.4	15.6	16.6	16.8
4H	15.8	16.8	16.1	17.1	17.3	15.5	16.5	15.8	16.8	17.0
6H	15.9	16.9	16.2	17.1	17.4	15.6	16.5	15.9	16.8	17.1
8H	15.9	16.8	16.2	17.1	17.4	15.6	16.5	15.9	16.8	17.1
12H	15.9	16.8	16.2	17.1	17.4	15.6	16.5	15.9	16.7	17.0
4H 2H	15.2	16.2	15.5	16.5	16.7	15.0	16.0	15.3	16.3	16.5
3H	16.0	16.9	16.3	17.2	17.5	15.7	16.6	16.1	16.9	17.2
4H	16.3	17.1	16.6	17.4	17.7	16.0	16.8	16.4	17.1	17.5
6H	16.4	17.2	16.8	17.5	17.9	16.2	16.9	16.5	17.2	17.6
8H	16.5	17.1	16.9	17.5	17.9	16.2	16.9	16.6	17.2	17.6
12H	16.5	17.1	16.9	17.5	17.9	16.2	16.8	16.6	17.2	17.6
8H 4H	16.3	17.0	16.7	17.3	17.7	16.1	16.7	16.5	17.1	17.5
6H	16.6	17.1	17.0	17.5	17.9	16.3	16.8	16.7	17.2	17.7
8H	16.6	17.1	17.1	17.5	18.0	16.3	16.8	16.8	17.3	17.7
12H	16.7	17.1	17.1	17.5	18.0	16.4	16.8	16.8	17.2	17.7
12H 4H	16.3	16.9	16.7	17.3	17.7	16.0	16.6	16.5	17.0	17.4
6H	16.5	17.0	17.0	17.5	17.9	16.3	16.8	16.7	17.2	17.6
8H	16.6	17.0	17.1	17.5	18.0	16.3	16.8	16.8	17.2	17.7
Variations with the observer position at spacings:										
S = 1.0H	+ 0.5 / - 0.7					+ 0.5 / - 0.7				
1.5H	+ 0.4 / - 0.4					+ 0.4 / - 0.4				
2.0H	+ 1.0 / - 0.8					+ 1.0 / - 0.9				

CIE Pub.117, 24727 lm Total Lamp Luminous Flux Correct (8log(F/F0) = 11.1)

C Range: 0 - 360DEG
 C Interval: 30.0DEG
 Test Speed: HIGH
 Temperature:25.3DEG
 Operators:01
 Test Date:2019-05-30

γ Range: 0 - 180DEG
 γ Interval: 1.0DEG
 Test System:EVERFINE GO-2000B_V1 SYSTEM V2.0.405.8
 Humidity:65.0%
 Test Distance:8.300m [K=1.0000]
 Remarks:

UTILIZATION FACTORS TABLE

Test:U:221.33V I:0.7058A P:151.32W PF:0.9687 Freq:49.99Hz Lamp Flux:24727.1x1 lm		
NAME: UFO	TYPE:150w	WEIGHT:
SPEC.:	DIM.:	SERIAL No.:
MFR.:	SUR.:	Shielding Angle:

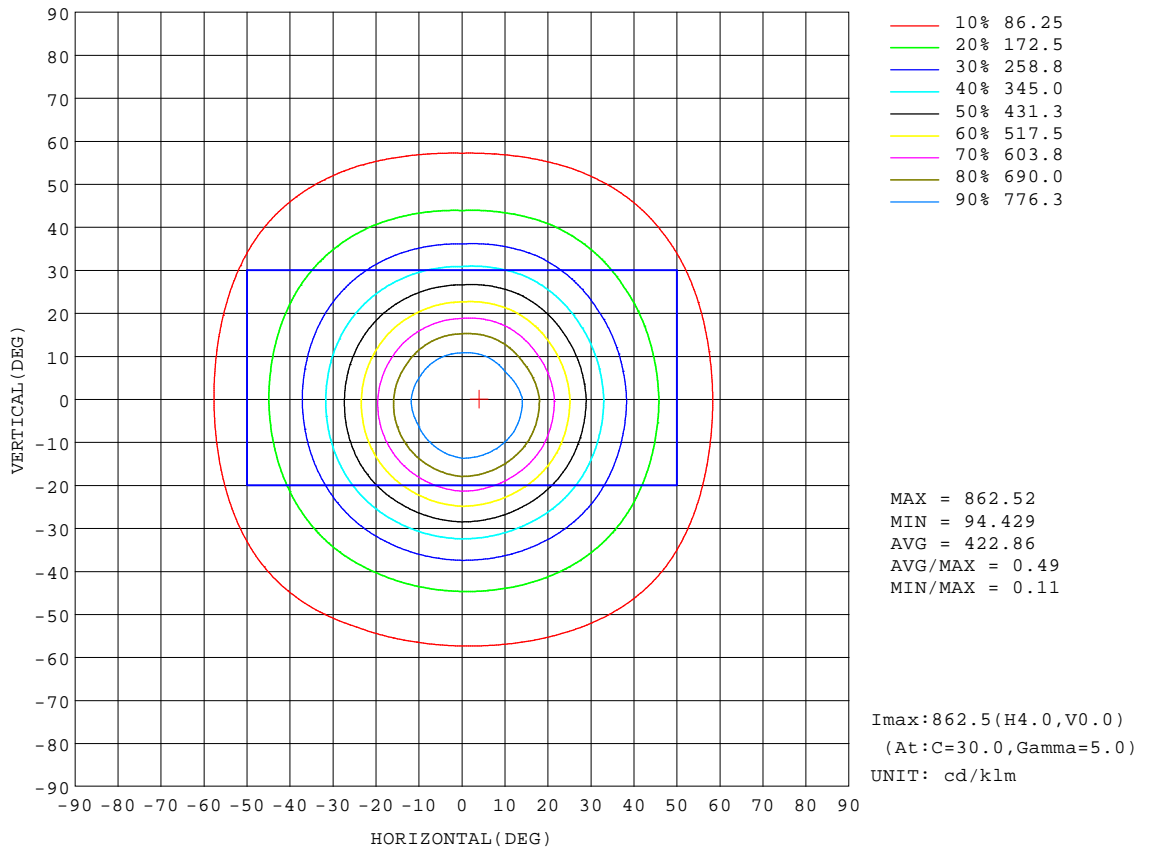
REFLECTANCE										
Ceiling	0.8	0.8	0.8	0.7	0.7	0.7	0.5	0.5	0.5	0
Walls	0.7	0.5	0.3	0.7	0.5	0.3	0.7	0.5	0.3	0
Working plane	0.2	0.2	0.2	0.2	0.2	0.2	0.2	0.2	0.2	0
ROOM INDEX	UTILIZATION FACTORS(PERCENT) $k(RI) \times RCR = 5$									
$k = 0.60$	72	63	58	72	63	58	71	62	58	52
0.80	81	73	67	80	72	67	79	71	66	61
1.00	88	80	74	87	79	74	85	80	74	68
1.25	94	86	81	92	85	81	90	84	80	74
1.50	98	91	86	96	90	85	94	88	84	78
2.00	102	96	92	101	95	91	98	93	89	83
2.50	105	100	95	103	98	94	100	96	92	85
3.00	107	103	99	105	101	97	102	98	95	88
4.00	110	106	103	108	105	102	104	101	99	91
5.00	112	109	106	110	107	104	105	103	101	93
ROOM INDEX	UF(total)									Direct
According to DIN EN 13032-2 2004			Suspended				SHRNOM = 1.25			

C Range: 0 - 360DEG
C Interval: 30.0DEG
Test Speed: HIGH
Temperature:25.3DEG
Operators:01
Test Date:2019-05-30

γ Range: 0 - 180DEG
 γ Interval: 1.0DEG
Test System:EVERFINE GO-2000B_V1 SYSTEM V2.0.405.8
Humidity:65.0%
Test Distance:8.300m [K=1.0000]
Remarks:

ISOCANDELA DIAGRAM

Test:U:221.33V I:0.7058A P:151.32W PF:0.9687 Freq:49.99Hz Lamp Flux:24727.1x1 lm		
NAME: UFO	TYPE:150w	WEIGHT:
SPEC.:	DIM.:	SERIAL No.:
MFR.:	SUR.:	Shielding Angle:



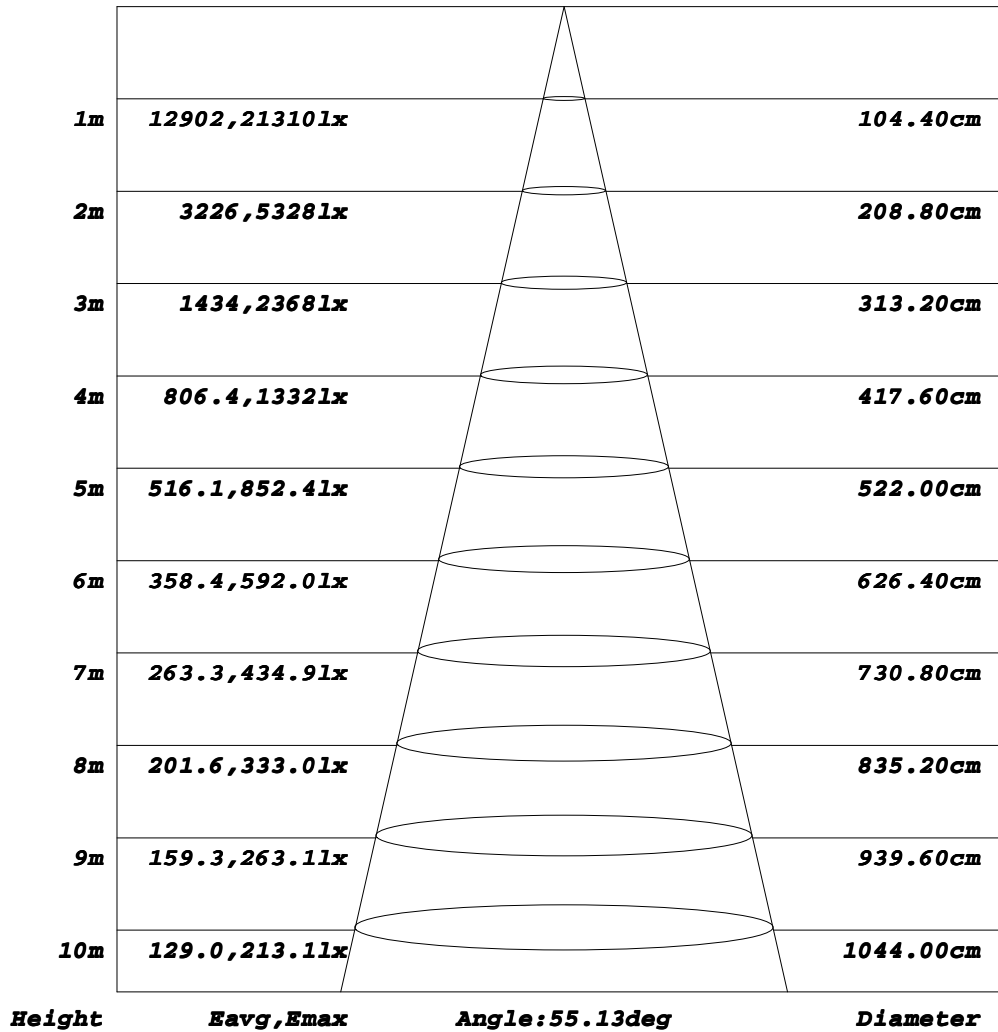
C Range: 0 - 360DEG
C Interval: 30.0DEG
Test Speed: HIGH
Temperature:25.3DEG
Operators:01
Test Date:2019-05-30

γ Range: 0 - 180DEG
γ Interval: 1.0DEG
Test System:EVERFINE GO-2000B_V1 SYSTEM V2.0.405.8
Humidity:65.0%
Test Distance:8.300m [K=1.0000]
Remarks:

AAI Figure

Test:U:221.33V I:0.7058A P:151.32W PF:0.9687 Freq:49.99Hz Lamp Flux:24727.1x1 lm		
NAME: UFO	TYPE:150w	WEIGHT:
SPEC.:	DIM.:	SERIAL No.:
MFR.:	SUR.:	Shielding Angle:

Flux out:11459 lm



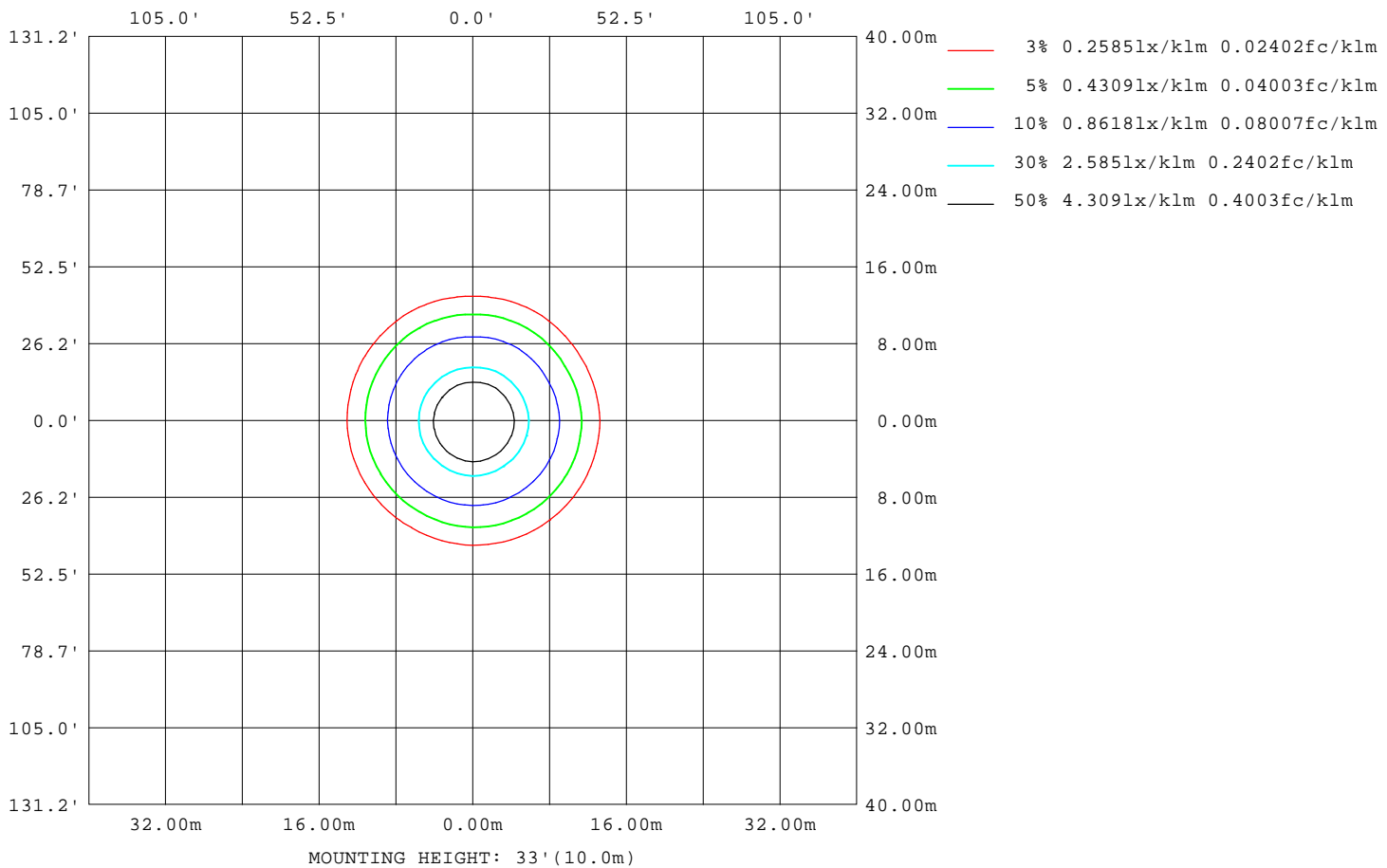
Note: The Curves indicate the illuminated area and the average illumination when the luminaire is at different distance.

C Range: 0 - 360DEG
C Interval: 30.0DEG
Test Speed: HIGH
Temperature: 25.3DEG
Operators: 01
Test Date: 2019-05-30

γ Range: 0 - 180DEG
γ Interval: 1.0DEG
Test System: EVERFINE GO-2000B_V1 SYSTEM V2.0.405.8
Humidity: 65.0%
Test Distance: 8.300m [K=1.0000]
Remarks:

ISOLUX DIAGRAM

Test:U:221.33V I:0.7058A P:151.32W PF:0.9687 Freq:49.99Hz Lamp Flux:24727.1x1 lm		
NAME: UFO	TYPE:150w	WEIGHT:
SPEC.:	DIM.:	SERIAL No.:
MFR.:	SUR.:	Shielding Angle:



C Range: 0 - 360DEG
C Interval: 30.0DEG
Test Speed: HIGH
Temperature: 25.3DEG
Operators: 01
Test Date: 2019-05-30

γ Range: 0 - 180DEG
γ Interval: 1.0DEG
Test System: EVERFINE GO-2000B_V1 SYSTEM V2.0.405.8
Humidity: 65.0%
Test Distance: 8.300m [K=1.0000]
Remarks:

LED Avg.L Report

Test:U:221.33V I:0.7058A P:151.32W PF:0.9687 Freq:49.99Hz Lamp Flux:24727.1x1 lm		
NAME: UFO	TYPE:150w	WEIGHT:
SPEC.:	DIM.:	SERIAL No.:
MFR.:	SUR.:	Shielding Angle:

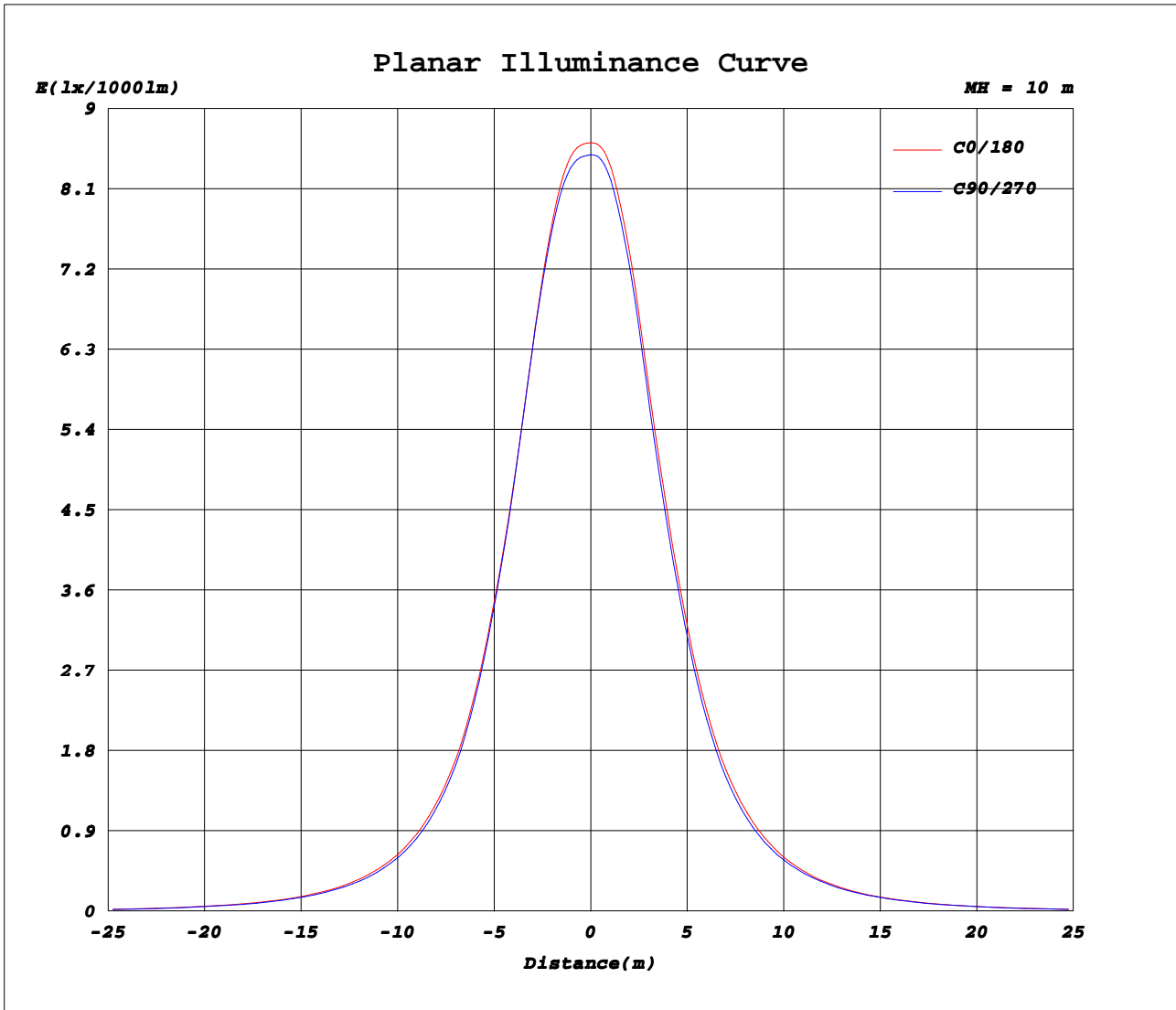
AvgL	cd/m2
L_0~180(65)av	46077
L_0~180(75)av	30954
L_0~180(85)av	15876
L_90~270(65)av	44892
L_90~270(75)av	30337
L_90~270(85)av	15535
L_45(65)av	45724
L_45(75)av	30744
L_45(85)av	15676

Standard: GB/T 29293-2012

C Range: 0 - 360DEG
C Interval: 30.0DEG
Test Speed: HIGH
Temperature:25.3DEG
Operators:01
Test Date:2019-05-30

γ Range: 0 - 180DEG
γ Interval: 1.0DEG
Test System:EVERFINE GO-2000B_V1 SYSTEM V2.0.405.8
Humidity:65.0%
Test Distance:8.300m [K=1.0000]
Remarks:

Planar Illuminance Curve



C Range: 0 - 360DEG
C Interval: 30.0DEG
Test Speed: HIGH
Temperature: 25.3DEG
Operators: 01
Test Date: 2019-05-30

γ Range: 0 - 180DEG
 γ Interval: 1.0DEG
Test System: EVERFINE GO-2000B_V1 SYSTEM V2.0.405.8
Humidity: 65.0%
Test Distance: 8.300m [K=1.0000]
Remarks:

LUMINOUS DISTRIBUTION INTENSITY DATA

Test:U:221.33V I:0.7058A P:151.32W PF:0.9687 Freq:49.99Hz Lamp Flux:24727.1x1 lm		
NAME: UFO	TYPE:150w	WEIGHT:
SPEC.:	DIM.:	SERIAL No.:
MFR.:	SUR.:	Shielding Angle:

Table--1

UNIT: cd/klm

C (DEG) \ γ (DEG)	0	30	60	90	120	150	180	210	240	270	300	330							
0	851	851	851	851	851	851	851	851	851	851	851	851							
5	851	852	851	851	849	847	843	841	841	841	845	847							
10	823	829	827	827	817	808	793	786	787	789	801	809							
15	749	757	756	757	743	730	702	690	692	696	717	732							
20	632	641	637	641	624	612	586	575	572	576	601	616							
25	514	518	513	517	504	498	476	468	464	466	490	503							
30	401	401	396	399	390	388	372	369	364	362	384	392							
35	305	304	299	299	293	292	285	284	280	275	293	296							
40	233	231	227	225	221	221	220	219	217	211	223	224							
45	178	176	173	170	166	169	170	169	168	163	171	171							
50	136	135	133	130	126	130	130	131	130	127	132	132							
55	103	103	101	99.1	96.1	99.6	99.2	100	100	97.5	101	101							
60	76.5	76.7	74.7	73.6	71.3	74.2	73.9	74.8	75.3	72.9	75.2	75.1							
65	54.1	53.8	52.2	51.6	50.2	52.4	52.4	53.2	53.9	52.1	53.5	53.2							
70	36.1	35.7	34.4	34.2	33.3	35.0	34.9	35.7	36.3	35.2	36.0	35.5							
75	22.3	21.8	20.9	20.9	20.4	21.6	21.5	22.2	22.7	22.0	22.4	21.9							
80	11.8	11.3	10.6	10.8	10.5	11.3	11.3	11.8	12.3	11.8	12.1	11.4							
85	3.94	3.58	3.14	3.29	3.19	3.69	3.62	3.99	4.34	4.11	4.20	3.75							
90	0.10	0.09	0.10	0.09	0.10	0.09	0.07	0.07	0.07	0.07	0.07	0.07							
95	0.13	0.13	0.13	0.13	0.13	0.13	0.10	0.10	0.09	0.09	0.09	0.09							
100	0.18	0.18	0.19	0.18	0.18	0.18	0.14	0.14	0.14	0.14	0.13	0.14							
105	0.25	0.25	0.25	0.25	0.25	0.25	0.20	0.20	0.20	0.20	0.19	0.20							
110	0.33	0.34	0.34	0.33	0.34	0.34	0.28	0.28	0.27	0.27	0.27	0.27							
115	0.44	0.44	0.44	0.43	0.44	0.45	0.38	0.38	0.37	0.37	0.36	0.37							
120	0.56	0.57	0.56	0.55	0.57	0.58	0.50	0.50	0.49	0.48	0.47	0.48							
125	0.71	0.72	0.72	0.71	0.73	0.74	0.65	0.65	0.64	0.63	0.62	0.63							
130	0.90	0.91	0.90	0.89	0.92	0.94	0.84	0.84	0.82	0.82	0.81	0.82							
135	1.14	1.14	1.13	1.13	1.16	1.19	1.08	1.08	1.06	1.06	1.04	1.05							
140	1.42	1.42	1.41	1.41	1.45	1.49	1.37	1.37	1.36	1.35	1.33	1.33							
145	1.74	1.74	1.73	1.74	1.79	1.83	1.71	1.72	1.70	1.70	1.67	1.66							
150	2.10	2.09	2.09	2.09	2.15	2.19	2.08	2.08	2.07	2.07	2.03	2.01							
155	2.47	2.46	2.46	2.46	2.51	2.55	2.45	2.45	2.44	2.43	2.40	2.38							
160	2.83	2.83	2.82	2.82	2.86	2.90	2.81	2.81	2.80	2.79	2.76	2.74							
165	3.18	3.18	3.17	3.17	3.19	3.23	3.15	3.15	3.14	3.13	3.10	3.08							
170	3.49	3.49	3.48	3.48	3.49	3.51	3.47	3.47	3.46	3.45	3.42	3.40							
175	3.70	3.71	3.71	3.70	3.71	3.72	3.71	3.71	3.71	3.69	3.68	3.66							
180	3.80	3.82	3.80	3.81	3.79	3.80	3.82	3.81	3.81	3.79	3.80	3.79							

C Range: 0 - 360DEG
C Interval: 30.0DEG
Test Speed: HIGH
Temperature: 25.3DEG
Operators: 01
Test Date: 2019-05-30

γ Range: 0 - 180DEG
γ Interval: 1.0DEG
Test System: EVERFINE GO-2000B_V1 SYSTEM V2.0.405.8
Humidity: 65.0%
Test Distance: 8.300m [K=1.0000]
Remarks: