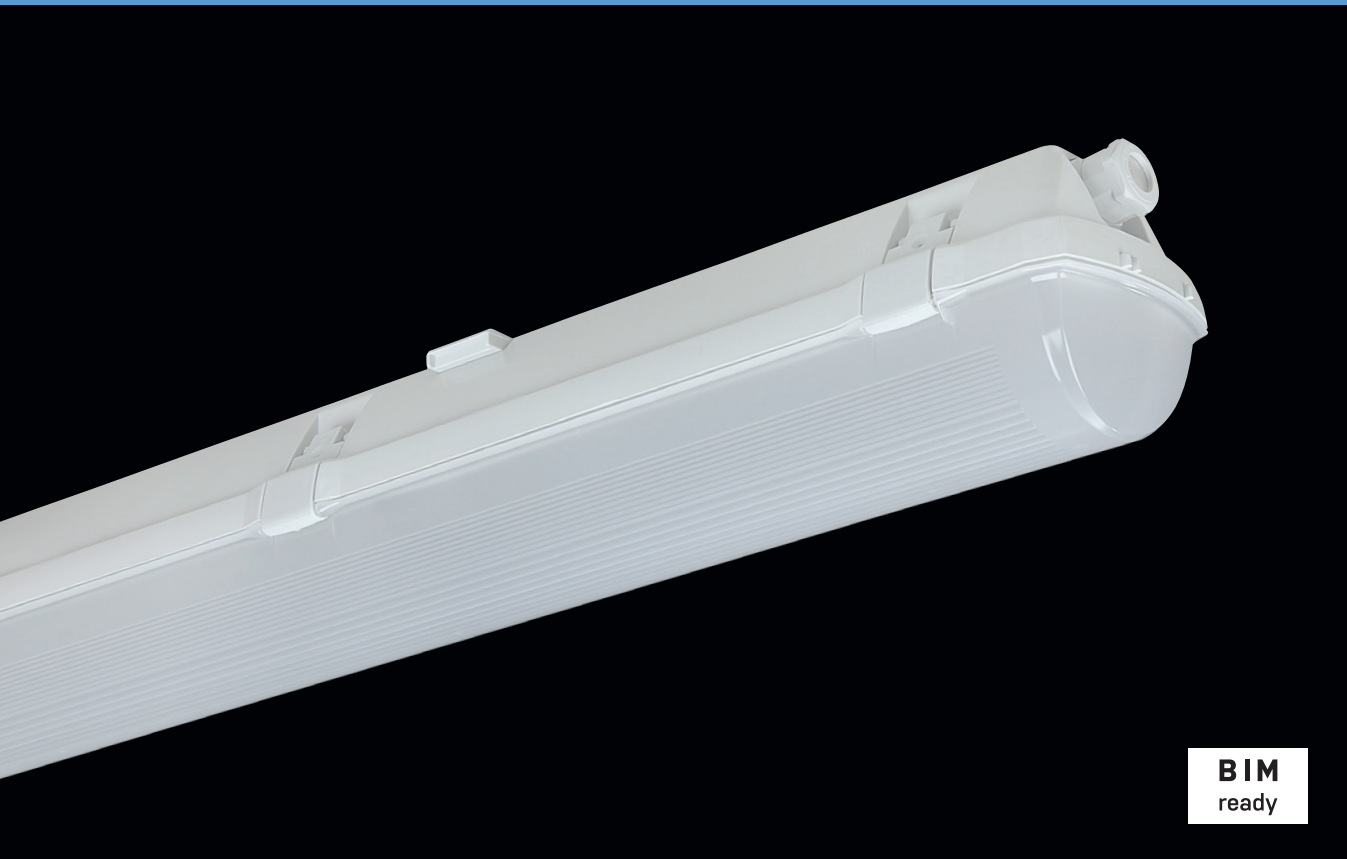


PRIMA LED



BIM
ready

... dustproof, waterproof and impact-resistant.

USE

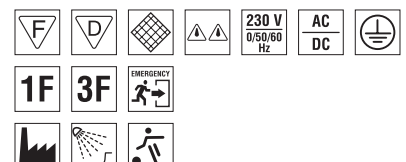
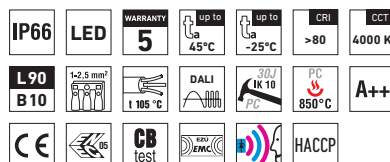
The light fitting is suitable for industrial indoor and outdoor roofed spaces, warehouses, sports areas, workshops, garages, transport terminals, utility structures and laboratories without a danger of explosion of gas, dust and combustible fumes.

The light fitting is resistant to dust, moisture and spouting water. The body and the diffuser made of polycarbonate (PC) have the increased resistance against deformation and impact.

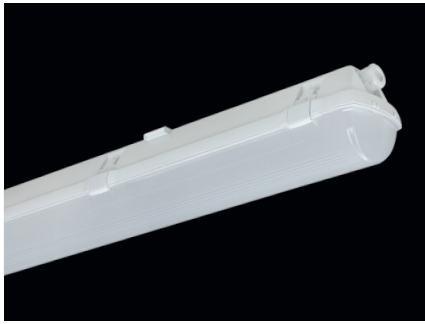
(It is necessary to consider exhalation in the air which can reduce the usability of the plastic at installations in an aggressive environment, see also page 193).

ADVANTAGES

- Light fitting protection **IP66**
- Maximum ambient temperature up to **t_a = 45 °C**
- Lifetime: 50,000 hours / L90B10
- Diffuser: translucent polycarbonate (PC) = high mechanical resistance
- Body: grey polycarbonate (PC) = high mechanical resistance
- Up to 45 % lower electricity consumption when compared to tubes T5
- In DALI version possibility of constant luminous flux for whole lifetime (CLO)
- Constant luminous flux even in ambient temperature of -25 °C
- Standard model - CRI > 80: 4000 K
- At request CRI > 80: 3000 K, 5000 K, 6500 K, CRI > 90: 3000 K, 4000 K
- It can be delivered in dimmable or emergency version
- Certification: ESĀ, ENEC, CB, HACCP



PRIMA LED PC, PCc



TECHNICAL DESCRIPTION

- Light fitting protection: IP66
- Maximum ambient temperature: $t_a = 45^\circ\text{C}$, Maximum ambient temperature: $t_a = 25^\circ\text{C}$ (version with emergency back-up source for 1 or 3 hours; M1h, M3h)
- Maximum system efficacy: 134 lm/W
- The watt and lumen values can vary by $\pm 7,5\%$
- Standard model - CRI > 80: 4000 K
- Lifetime: 50,000 hours / L90B10
- Diffuser: translucent polycarbonate (PC), UV stable, impact-resistant
- Body: grey polycarbonate (PC), UV stable, impact-resistant
- Reflector: steel sheet, white colour (RAL 9003)
- Clips: polyamide + 15 % glass fibre or stainless steel + polyamide
- Sealing: polyurethane (PUR), foamed body groove
- Cable glands: screwed PG 13.5, or rubber (SBS)
- Distance part: polyamide + 10 % glass fibre
- Terminal block: screwless, three-pole (basic version), or screwed
- Installation: package contains stainless hooks and stainless brackets
- Electric equipment: LED modules, current driver or current driver DALI

Code	Type	Max. ambient temperature [°C]	Luminous flux of LED modules [lm]	Luminous flux of light fitting [lm]	Power consumption [W]	System efficacy [lm/W]	Net weight [kg]	A [mm]	D [mm]
For ambient temperature $t_a = 45^\circ\text{C}$ - body: grey polycarbonate - diffuser: translucent polycarbonate									
65010	PRIMA LED 1.2ft PC 1300/840	45	1300	1260	10	126	1,3	662	350
65020	PRIMA LED 1.2ft PC 1600/840	45	1600	1510	12	126	1,2	662	350
65030	PRIMA LED 1.2ft PC 2200/840	40	2200	1950	15	130	1,3	662	350
65040	PRIMA LED 1.4ft PC 2600/840	45	2600	2320	18	129	1,9	1272	700
65050	PRIMA LED 1.4ft PC 3200/840	45	3200	2860	22	130	1,7	1272	700
65060	PRIMA LED 1.4ft PC 4400/840	40	4400	3920	30	131	1,9	1272	700
65460	PRIMA LED 1.4ft PC 6400/840	40	6400	5650	43	131	1,9	1272	700
65070	PRIMA LED 1.5ft PC 3250/840	45	3250	2810	22	128	2,3	1572	940
65080	PRIMA LED 1.5ft PC 4000/840	45	4000	3530	27	131	2,2	1572	940
65090	PRIMA LED 1.5ft PC 5500/840	40	5500	4940	37	134	2,3	1572	940
65490	PRIMA LED 1.5ft PC 8000/840	40	8000	7090	54	131	2,3	1572	940

65020 PRIMA LED 1.2ft PC 1600/840 = suitable replacement for T8 fl. tube light fitting PRIMA 118 - 1x18W
 65050 PRIMA LED 1.4ft PC 3200/840 = suitable replacement for T8 fl. tube light fitting PRIMA 136 - 1x36W
 65460 PRIMA LED 1.4ft PC 6400/840 = suitable replacement for T8 fl. tube light fitting PRIMA 236 - 2x36W
 65080 PRIMA LED 1.5ft PC 4000/840 = suitable replacement for T8 fl. tube light fitting PRIMA 158 - 1x58W
 65490 PRIMA LED 1.5ft PC 8000/840 = suitable replacement for T8 fl. tube light fitting PRIMA 258 - 2x58W

PRIMA LED PC

Non-dimmable driver - plastic clips

Code	Type	1F	3F	M1h	M3h	3F M1h	3F M3h
65010	PRIMA LED 1.2ft PC 1300/840	x	x	x	x	x	x
65020	PRIMA LED 1.2ft PC 1600/840	x	x	x	x	x	x
65030	PRIMA LED 1.2ft PC 2200/840	x	x	x	x	x	x
65040	PRIMA LED 1.4ft PC 2600/840	65140	65340	65044	65045	65344	65345
65050	PRIMA LED 1.4ft PC 3200/840	65150	65350	65054	65055	65354	65355
65060	PRIMA LED 1.4ft PC 4400/840	65160	65360	65064	65065	65364	65365
65460	PRIMA LED 1.4ft PC 6400/840	65461	65462	x	x	x	x
65070	PRIMA LED 1.5ft PC 3250/840	65170	65370	65074	65075	65374	65375
65080	PRIMA LED 1.5ft PC 4000/840	65180	65380	65084	65085	65384	65385
65090	PRIMA LED 1.5ft PC 5500/840	65190	65390	65094	65095	65394	65395
65490	PRIMA LED 1.5ft PC 8000/840	65491	65492	x	x	x	x

PRIMA LED PCc

Non-dimmable driver - stainless clips (c)

Code	Type	1F	3F	M1h	M3h	3F M1h	3F M3h
65210	PRIMA LED 1.2ft PCc 1300/840	x	x	x	x	x	x
65220	PRIMA LED 1.2ft PCc 1600/840	x	x	x	x	x	x
65230	PRIMA LED 1.2ft PCc 2200/840	x	x	x	x	x	x
65240	PRIMA LED 1.4ft PCc 2600/840	65540	65640	65244	65245	65644	65645
65250	PRIMA LED 1.4ft PCc 3200/840	65550	65650	65254	65255	65654	65655
65260	PRIMA LED 1.4ft PCc 4400/840	65560	65660	65264	65265	65664	65665
65760	PRIMA LED 1.4ft PCc 6400/840	65761	65762	x	x	x	x
65270	PRIMA LED 1.5ft PCc 3250/840	65570	65670	65274	65275	65674	65675
65280	PRIMA LED 1.5ft PCc 4000/840	65580	65680	65284	65285	65684	65685
65290	PRIMA LED 1.5ft PCc 5500/840	65590	65690	65294	65295	65694	65695
65790	PRIMA LED 1.5ft PCc 8000/840	65791	65792	x	x	x	x

Example of type marking: 65644 = PRIMA LED 1.4ft PCc 2600/840 **3F M1h**

PRIMA LED PC DALI

Digital dimmable driver DALI - plastic clips

Code	Type	1F	3F	M1h	M3h	3F M1h	3F M3h
65013	PRIMA LED 1.2ft PC 1300/840 DALI	x	x	x	x	x	x
65023	PRIMA LED 1.2ft PC 1600/840 DALI	x	x	x	x	x	x
65033	PRIMA LED 1.2ft PC 2200/840 DALI	x	x	x	x	x	x
65043	PRIMA LED 1.4ft PC 2600/840 DALI	65143	65343	65047	65048	65347	65348
65053	PRIMA LED 1.4ft PC 3200/840 DALI	65153	65353	65057	65058	65357	65358
65063	PRIMA LED 1.4ft PC 4400/840 DALI	65163	65363	65067	65068	65367	65368
65860	PRIMA LED 1.4ft PC 6400/840 DALI	65861	65862	x	x	x	x
65073	PRIMA LED 1.5ft PC 3250/840 DALI	65173	65373	65077	65078	65377	65378
65083	PRIMA LED 1.5ft PC 4000/840 DALI	65183	65383	65087	65088	65387	65388
65093	PRIMA LED 1.5ft PC 5500/840 DALI	65193	65393	65097	65098	65397	65398
65890	PRIMA LED 1.5ft PC 8000/840 DALI	65891	65892	x	x	x	x

PRIMA LED PCc DALI

Digital dimmable driver DALI - stainless clips (c)

Code	Type	1F	3F	M1h	M3h	3F M1h	3F M3h
65213	PRIMA LED 1.2ft PCc 1300/840 DALI	x	x	x	x	x	x
65223	PRIMA LED 1.2ft PCc 1600/840 DALI	x	x	x	x	x	x
65233	PRIMA LED 1.2ft PCc 2200/840 DALI	x	x	x	x	x	x
65243	PRIMA LED 1.4ft PCc 2600/840 DALI	65543	65643	65247	65248	65647	65648
65253	PRIMA LED 1.4ft PCc 3200/840 DALI	65553	65653	65257	65258	65657	65658
65263	PRIMA LED 1.4ft PCc 4400/840 DALI	65563	65663	65267	65268	65667	65668
65960	PRIMA LED 1.4ft PCc 6400/840 DALI	65961	65962	x	x	x	x
65273	PRIMA LED 1.5ft PCc 3250/840 DALI	65573	65673	65277	65278	65677	65678
65283	PRIMA LED 1.5ft PCc 4000/840 DALI	65583	65683	65287	65288	65687	65688
65293	PRIMA LED 1.5ft PCc 5500/840 DALI	65593	65693	65297	65298	65697	65698
65990	PRIMA LED 1.5ft PCc 8000/840 DALI	65991	65992	x	x	x	x

Example of type marking: 65693 = PRIMA LED 1.5ft PCc 5500/840 DALI **3F**

LEGEND

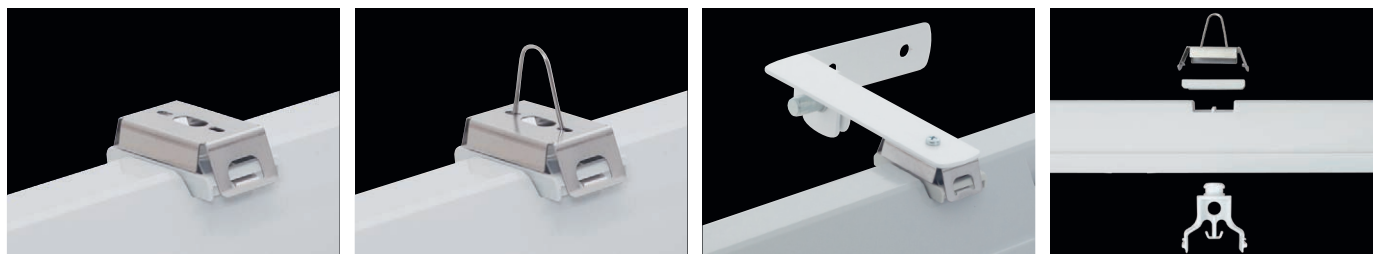
- DALI** – version with digital dimmable driver DALI
- 1F** – 1 phase wiring cables for through-wiring
- 3F** – 3 phase wiring cables for through-wiring

- M1h** – emergency back-up source with operating time of 1 hour (SA) for both permanent and emergency illumination
- M3h** – emergency back-up source with operating time of 3 hours (SA) for both permanent and emergency illumination

Batteries must be formatted before their putting into operation. Assembly instructions must be observed at installation.

LIGHT FITTING ATTACHMENT

- a) Directly to a ceiling or a wall with the use of screws and stainless brackets
- b) Suspension with the use of stainless hooks
- c) Attachment with the use of side hangers to the wall



LIGHT FITTING DETAILED VIEW

PRIMA LED

